

# ICEfaces™ Eclipse Integration

V3.1.2

## Overview

ICEfaces Eclipse Integration provides ICEfaces support for developers who use **Eclipse IDE for Java EE Developers** for ICEfaces application development. This integration extends Eclipse's Web Tools Platform (WTP) and provides following extra features for ICEfaces support.

- Adds ICEfaces, ICEfaces Facelets, and dependent libraries to your project.
- Configures web.xml and faces-config.xml for ICEfaces support.
- Provides ICEfaces/Facelets friendly JSP/JSPX page templates.
- Integrates ICEfaces components into Visual JSF Page Designer.

## Requirements

### 1. Eclipse IDE for Java EE Developers v3.3.x

This bundle includes required Eclipse WTP (Web Tool Platform). It can be downloaded from <http://www.eclipse.org/downloads/>

### 2. ICEfaces-1.7.1-Eclipse-3.3-plugins.zip

This is core package of ICEfaces Eclipse Integration. It can be downloaded from <http://www.icefaces.org/main/downloads/os-downloads.iframe>.

It contains ICEfaces runtime library v1.7.1.

Note: ICEfaces Eclipse Integration v3.1.2 can only be used with *Eclipse IDE for Java EE Developers* v3.3.x known as Europa and it cannot be used with *Eclipse IDE for Java EE Developers* v3.4 known as Ganymede. ICEfaces runtime library v1.7.1 is included and projects using previous version of ICEfaces such as v1.7.0, and 1.6.2 should be updated to ICEfaces v1.7.1

## Installation

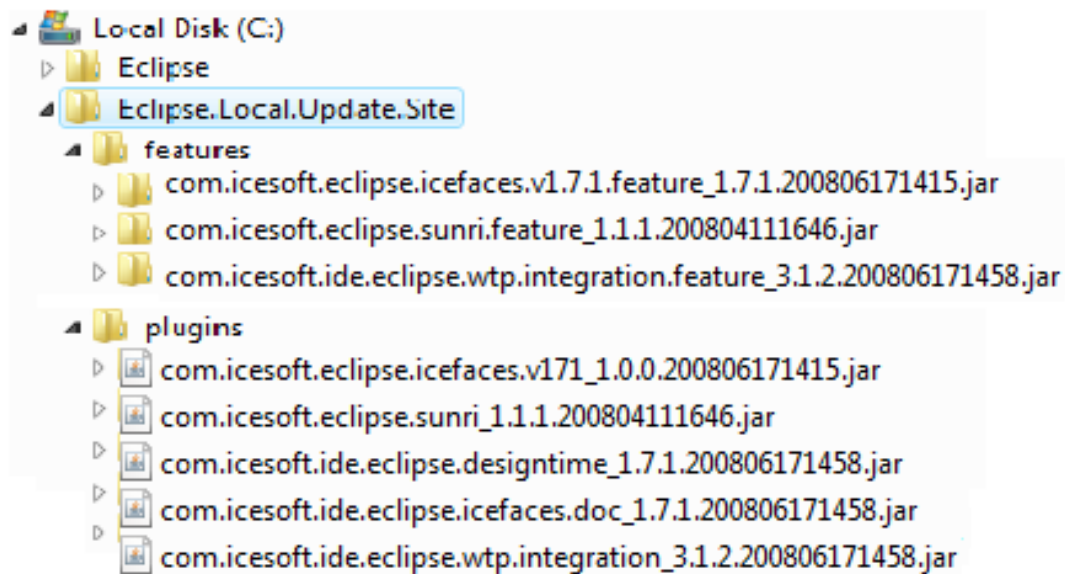
### 1. Remove previous version of ICEfaces Eclipse Integrations if you have already installed

This can be done by selecting **Help -> Software Updates... -> Manage Configuration**

Highlight all previous version of ICEfaces integration plugins, and right click on it and select **Uninstall**. This requires you to restart Eclipse.

### 2. Installation

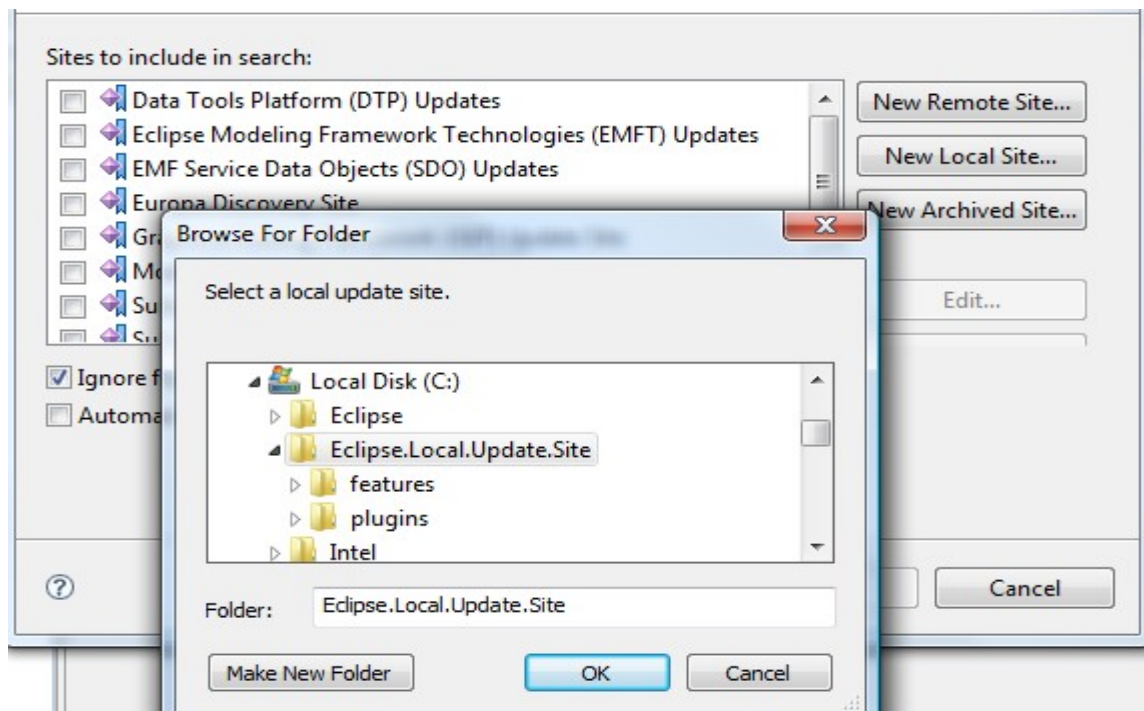
- Download and extract **ICEfaces-1.7.1-Eclipse-3.3-plugins.zip** to a local directory, for example, C:\Eclipse.Local.Update.Site
- After they are extracted, 2 sub-directories features and plugins are created as shown below.



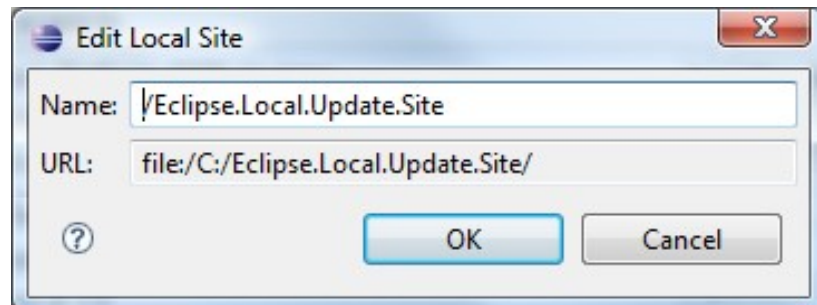
- Start Eclipse
- From Eclipse main menu bar, select

**Help -> Software Updates... -> Find and Install... -> Search for new features to install -> New Local Site...,**

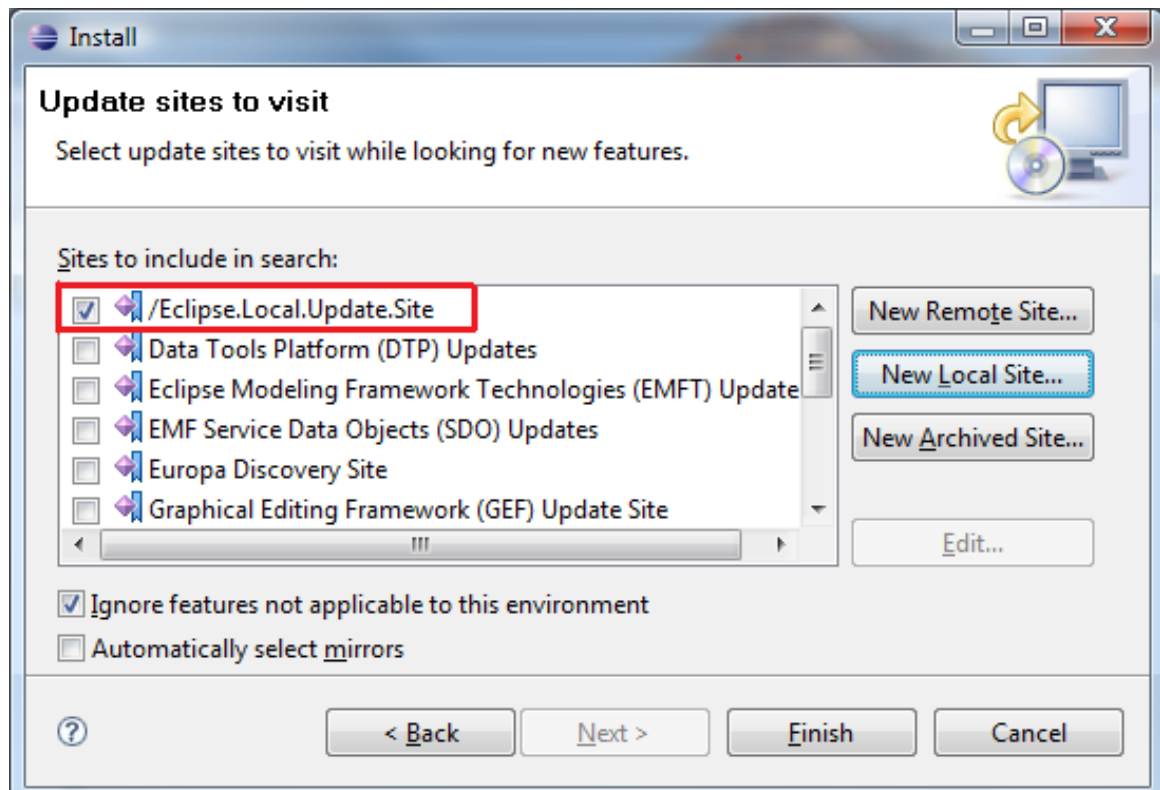
select C:\\Eclipse.Local.Update.Site directory, where the zip files have been extracted in above step.



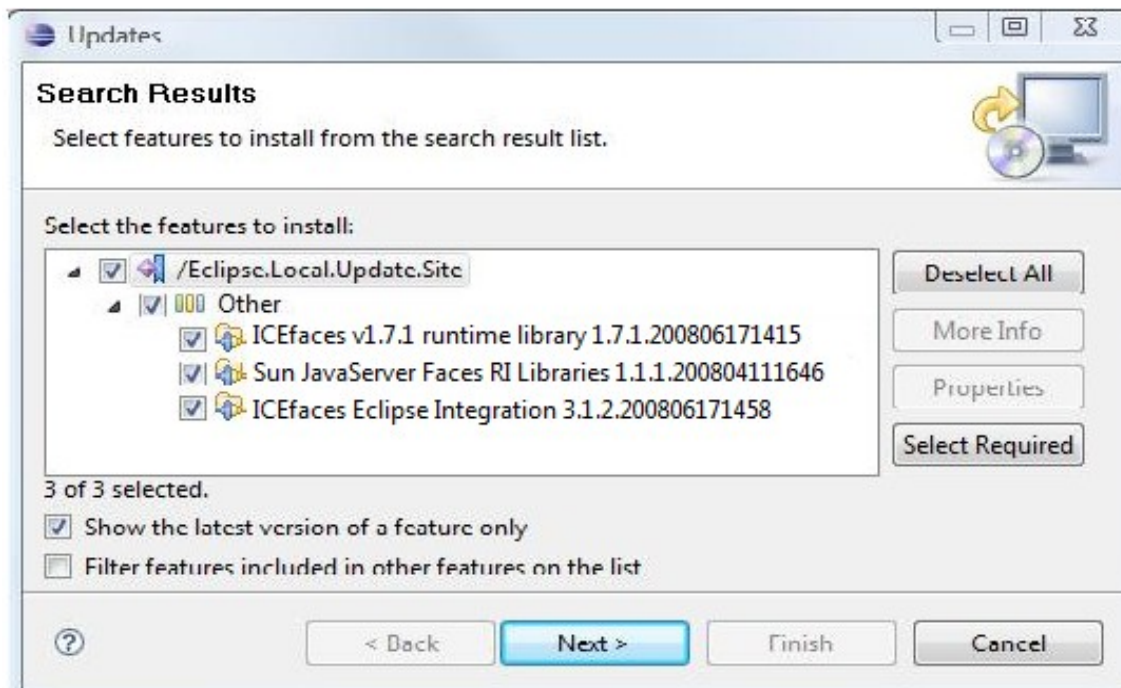
- Click **Ok** button in *Browse For Foler* dialog, and **Ok** button in *Edit Local Site* dialog.



- In *Update sites to visit* dialog, check the newly added update site and click **Finish**



- Select all features included as shown below, and click **Next>** button

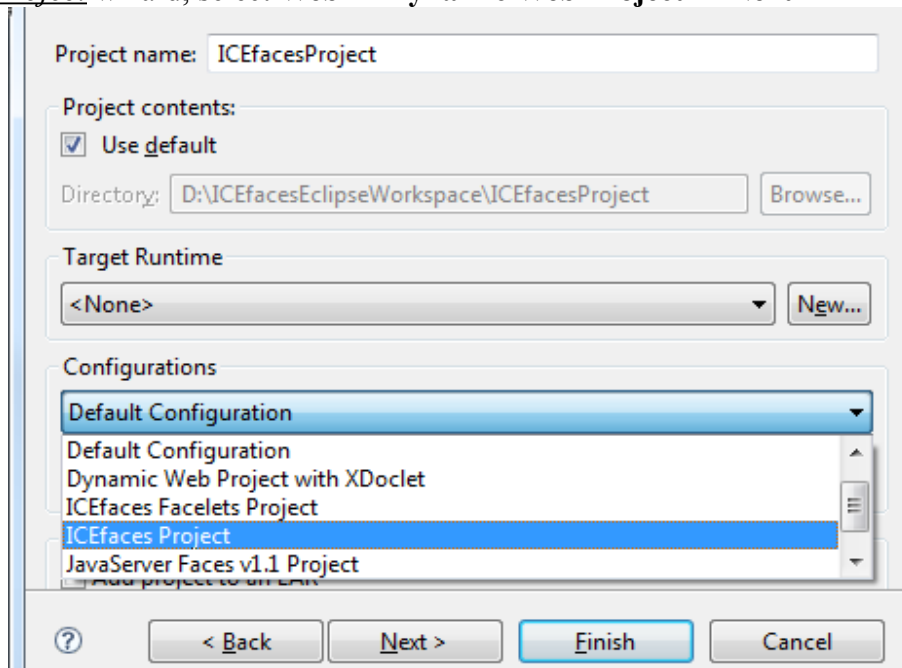


- Finally click **Finish** button in *Installation* dialog. Restart Eclipse is also required.

## Create new project with ICEfaces capabilities

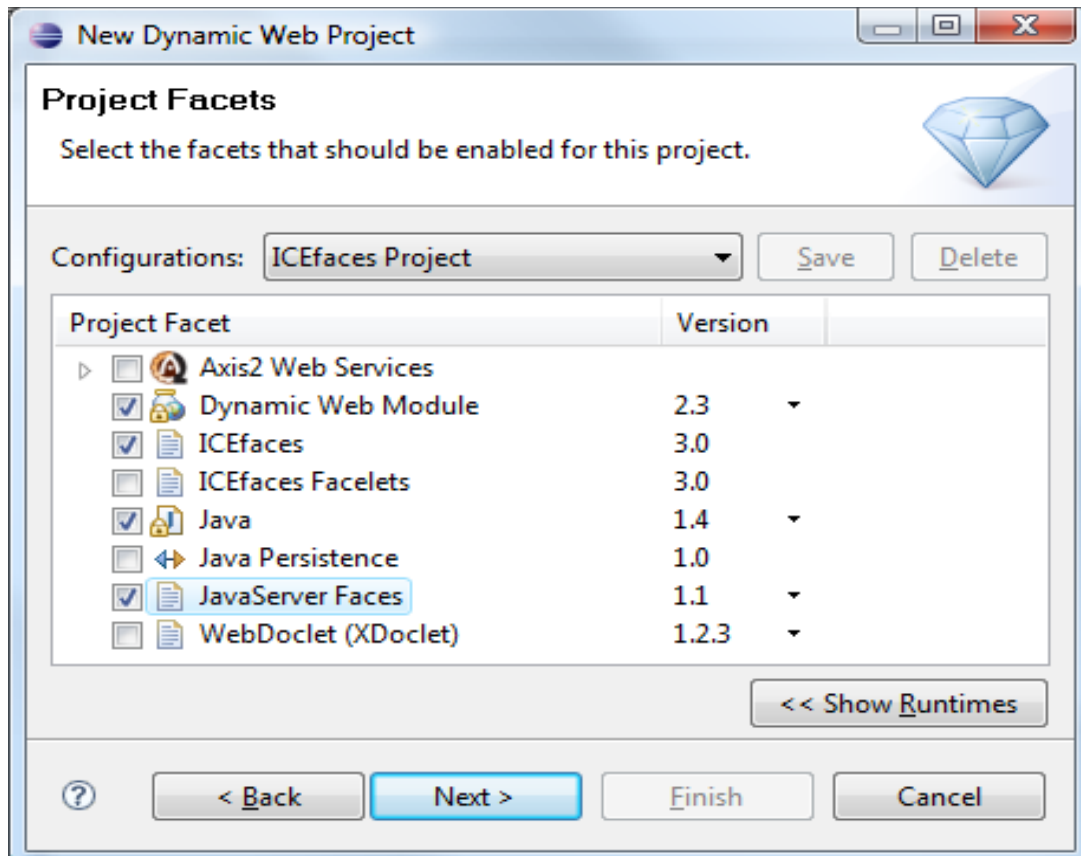
The following instructions describe how to use how to create a new project with ICEfaces capabilities.

1. From Eclipse main menu bar, select **File -> New -> Project...**,
2. In *New Project* wizard, select **Web -> Dynamic Web Project -> Next>**



3. Type in project name, select *Target Runtime* and *Configurations*. And click **Next>**
4. In Project Facets wizard dialog, select either ICEfaces Project or ICEfaces Facelets Project. Note that currently ICEfaces 1.7.1 supports JSF 1.2 by using JSF 1.1 compatibility mode. As a

result, only JavaServer Faces facet v1.1 can be selected but JSF RI v1.2 library can be selected.



5. In JSF Capabilities wizard dialog, pre-built Sun JSF RI v1.1\_02, Sun JSF RI v1.2\_04, Sun EL RI v2.1, and Xerces v1.3.1 libraries are provided. Generally speaking, Xerces library is only required in JVM 1.4.x, and EL (Expression Language ) library is not required on Tomcat 6.x and JavaEE 5 servers. Added ICEfaces Facelets library only if you are creating ICEfaces Facelets project.

**New Dynamic Web Project**

### JSF Capabilities

Add JSF capabilities to this Web Project

JSF Libraries: ☐ Server Supplied JSF Implementation  
☒ Sun JSF RI v1.2\_04 ☒ Deploy

Component Libraries

<ul style="list-style-type: none"> <li>ICEfaces Facelets library v1.7.1</li> <li>Sun EL RI v2.1</li> <li>Xerces v1.3.1</li> </ul>	<input data-bbox="922 554 987 590" type="button" value="&gt;"/> <input data-bbox="922 604 987 640" type="button" value="&lt;"/>	<table border="1"> <thead> <tr> <th>Deploy</th> <th>Library Name</th> </tr> </thead> <tbody> <tr> <td><input checked="" type="checkbox"/></td> <td>Apache Commons Libr...</td> </tr> <tr> <td><input checked="" type="checkbox"/></td> <td>ICEfaces library v1.7.1</td> </tr> </tbody> </table>	Deploy	Library Name	<input checked="" type="checkbox"/>	Apache Commons Libr...	<input checked="" type="checkbox"/>	ICEfaces library v1.7.1
Deploy	Library Name							
<input checked="" type="checkbox"/>	Apache Commons Libr...							
<input checked="" type="checkbox"/>	ICEfaces library v1.7.1							

JSF Configuration File: /WEB-INF/faces-config.xml

JSF Servlet Name: Faces Servlet

JSF Servlet Classname: javax.faces.webapp.FacesServlet

URL Mapping Patterns: /faces/\*

6. In ICEfaces Capabilities wizard dialog, only ICEfaces library can be selected. Make sure “Deploy” is checked.

**New Dynamic Web Project**

### ICEfaces Capabilities

Add one of ICEfaces libraries to this JSF Project.

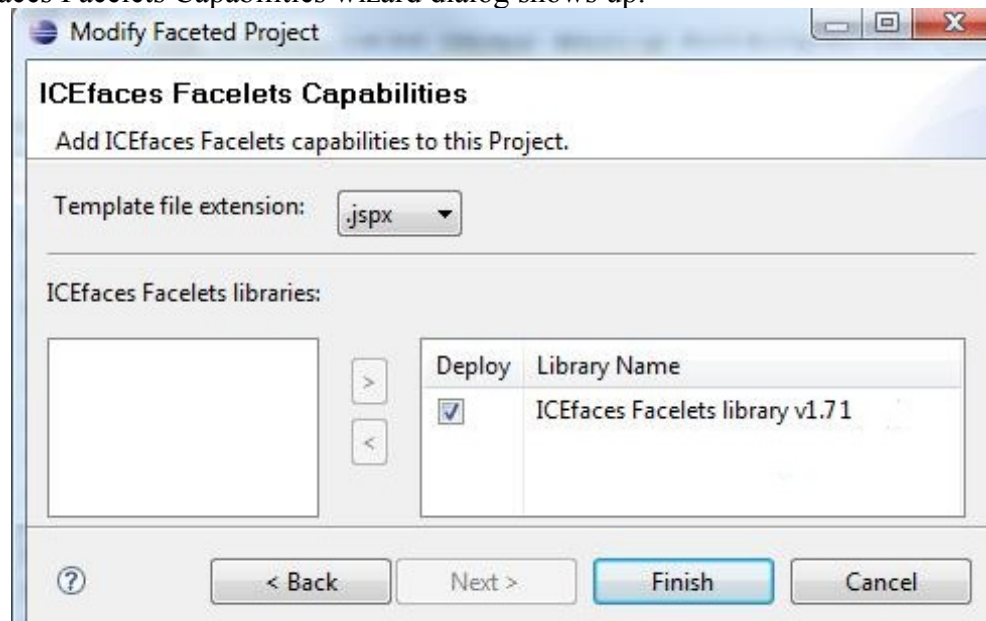
**Note:**

1. Only one ICEfaces library can be selected.
2. Xerces library is required on JVM 1.4.x. only.
3. Apache Commons Library is required if server does not include it.
4. EL(Expression Language) RI library is not required on Tomcat6 and JavaEE5 servers.

ICEfaces libraries :

<input data-bbox="646 1625 678 1661" type="button" value="&gt;"/> <input data-bbox="646 1675 678 1711" type="button" value="&lt;"/>	<table border="1"> <thead> <tr> <th>Deploy</th> <th>Library Name</th> </tr> </thead> <tbody> <tr> <td><input checked="" type="checkbox"/></td> <td>ICEfaces library v1.7.1</td> </tr> </tbody> </table>	Deploy	Library Name	<input checked="" type="checkbox"/>	ICEfaces library v1.7.1
Deploy	Library Name				
<input checked="" type="checkbox"/>	ICEfaces library v1.7.1				

7. Click **Finish** only if you haven't selected ICEfaces Facelets Project in step 4. Otherwise, Next> button will be enabled. Click Next> button.
8. ICEfaces Facelets Capabilities wizard dialog shows up.

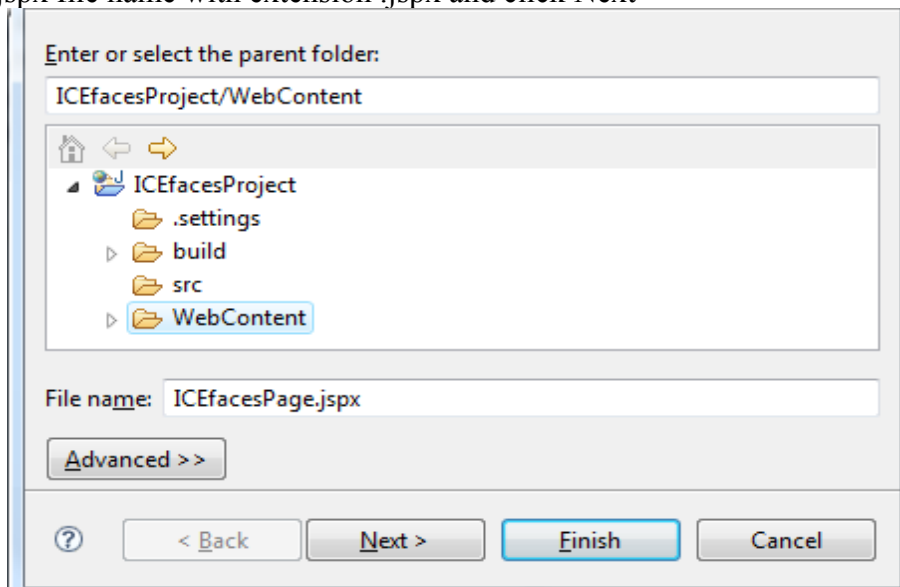


9. Click **Finish**. Done.

## Create ICEfaces friendly JSP page with provided template

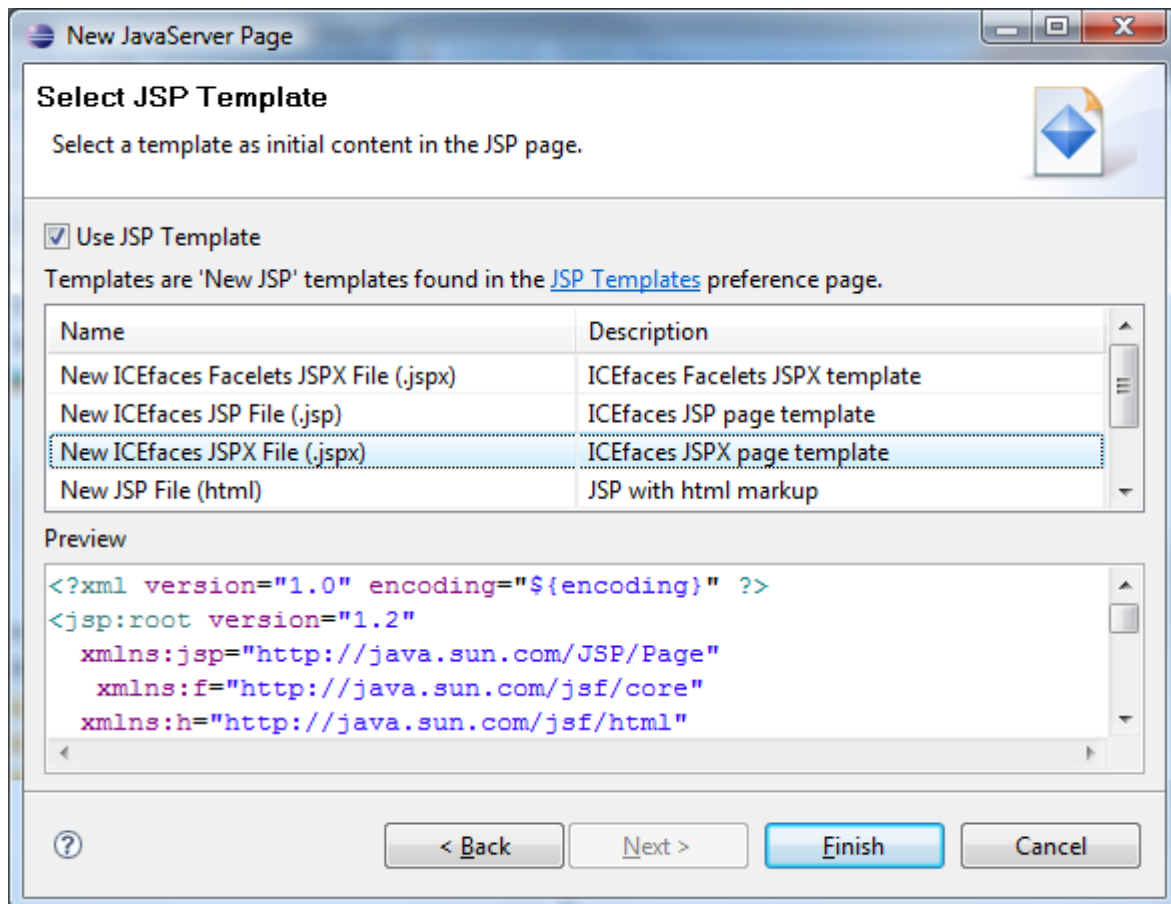
ICEfaces friendly JSP page templates are also provided in this integration to make your ICEfaces application development easier. The following instructions describe how to use the provided template.

1. Right click on WebContent folder in *Package Explorer* view and select following menu items **New -> JSP**
2. Type in jspx file name with extension .jspx and click Next>



3. Select **New ICEfaces JSPX File** or **New ICEfaces Facelets JSPx File**. Click **Finish**.





4. Current Eclipse release version v3.3.2 doesn't set JSP-JSP page editor (also called Visual JSF Page Designer, Web Page Editor) as editor forjspx page. Forcing JSP-JSP page editor to loadjspx file is required . See next section “Use ICEfaces components in Visual JSF Page Designer”.

## Use ICEfaces components in Visual JSF Page Designer

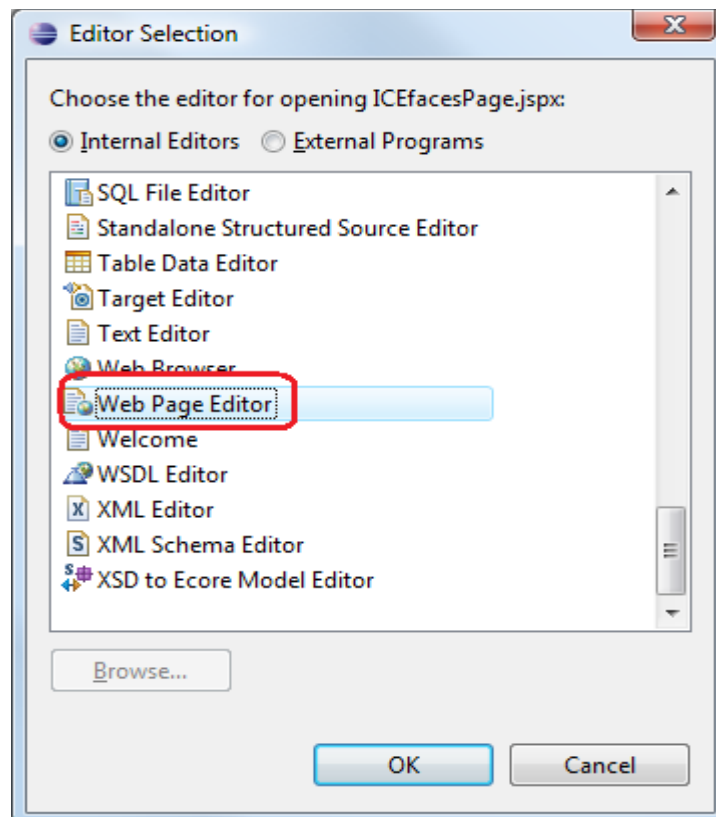
New Eclipse Visual JSF Page Designer is added in Eclipse 3.3 as part of WTP 2.0. It provides an intuitive close-to-WYSIWIG editing experience. It allows visually JSF page layout and components drag and drop. See **JavaServer Faces Tooling Developer Guide** for detail. This integration includes beta version of ICEfaces components design time support for Eclipse Visual JSF Page Designer. ICEfaces components palette view, property view for ICEfaces components' attributes are both supported.

1. Use JSF-JSP editor for ICEfaces page.

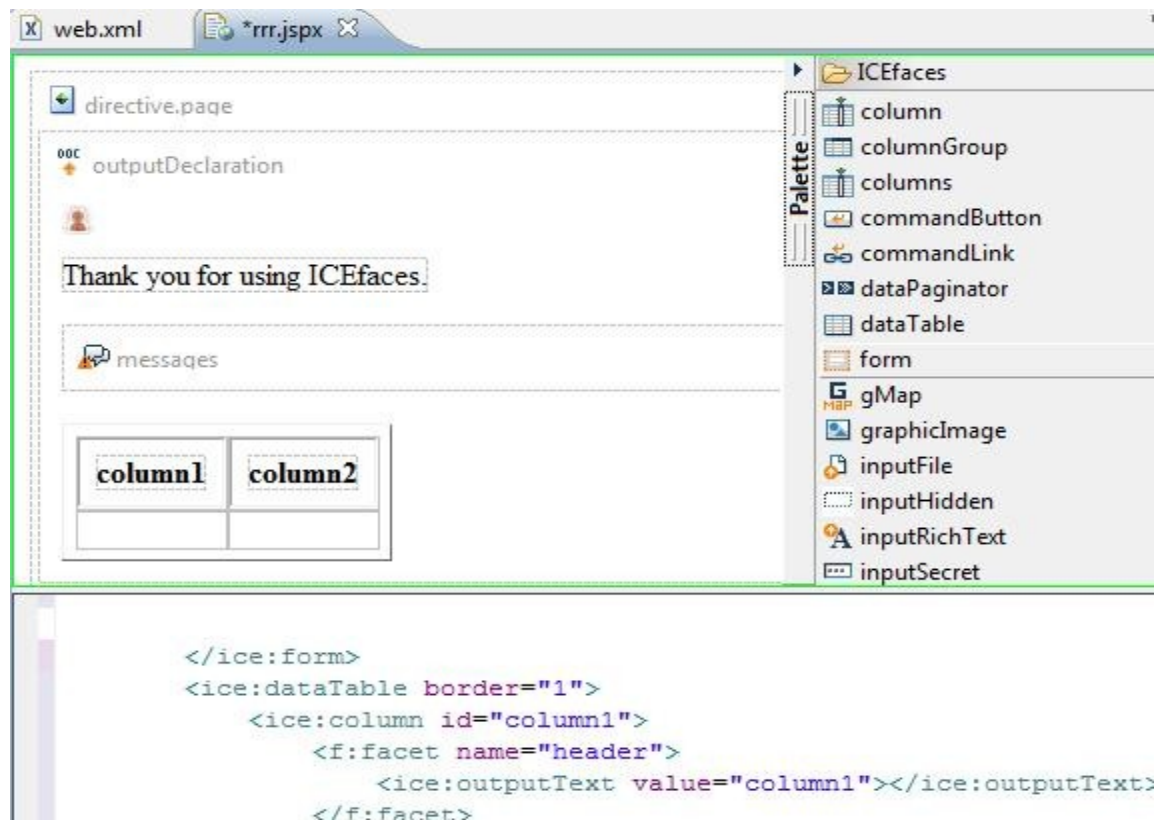
Current Eclipse release version v3.3.x doesn't set JSP-JSP page editor as editor forjspx page. Following the following instructions to open ICEfaces page in JSF-JSP editor.

1. Right click on the ICEfacesjspx page
2. Select **Open with -> Other...**





3. Select Web Page Editor, and click OK button
2. Select ICEfaces components in Palette view



### 3. Edit ICEfaces component attributes in Property editor

